

Mouse anti Human IgG1 Antibody

Product Information

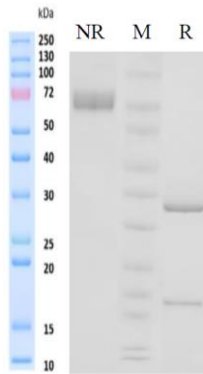
Product Name	Mouse anti Human IgG1 Antibody
Storage temp.	Store at 2-8°C short term (1-2 weeks).Store at $\leq -20^{\circ}\text{C}$ long term. Avoid repeated freeze-thaw.
Catalog# / Size	GM-87811AB-100 / 100 μg GM-87811AB-1mg / 1 mg GM-87811AB-5mg / 5 mg

Antibody Information

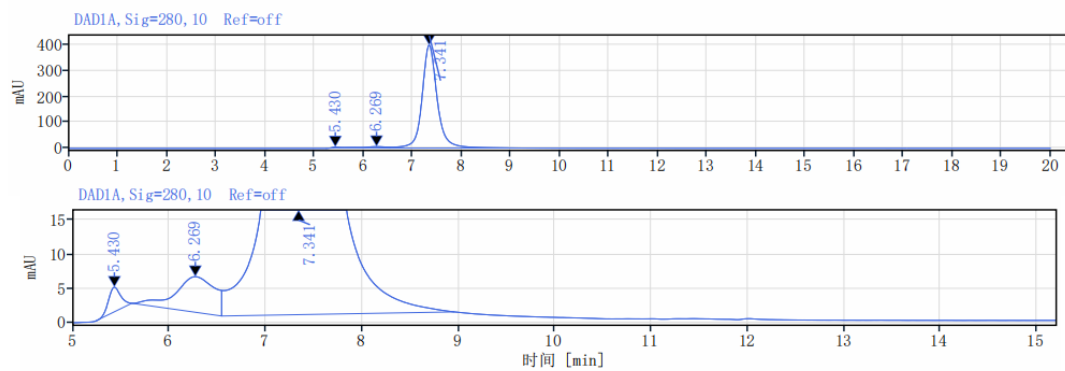
Expression System	CHO
Aggregation	< 5% as determined by SEC-HPLC
Purity	> 95% as determined by SDS-PAGE
Endotoxin	<1 EU/mg, determined by LAL gel clotting assay
Sterility	0.22 μm Filtered
Target	Human IgG1
Clone	/
Alternative Names	/
Source/Isotype	Monoclonal Mouse IgG1, kappa
Application	ELISA
Description	Secondary antibodies refer to antibodies that bind to primary antibodies to amplify the signal generated by the primary antibodies. They are commonly used in experiments such as immunohistochemistry, immunofluorescence, and Western blotting to detect and quantify specific target proteins. Secondary antibodies are typically sourced from species different from the primary antibodies, such as rabbit anti-mouse or goat anti-rabbit. Choosing secondary antibodies from different species helps prevent binding of secondary antibodies to endogenous antibodies in the sample, thereby reducing background interference and enhancing the specificity of the experiment.
Formulation	PBS, pH 7.4, Contains no stabilizers or preservatives

SDS-PAGE

On SDS-PAGE under reducing (R)/non-reducing(N-R) condition. The gel was stained overnight with Coomassie Blue. The purity of the protein is greater than 95%.



SEC-HPLC



The purity of this product is more than 95% verified by SEC-HPLC.